

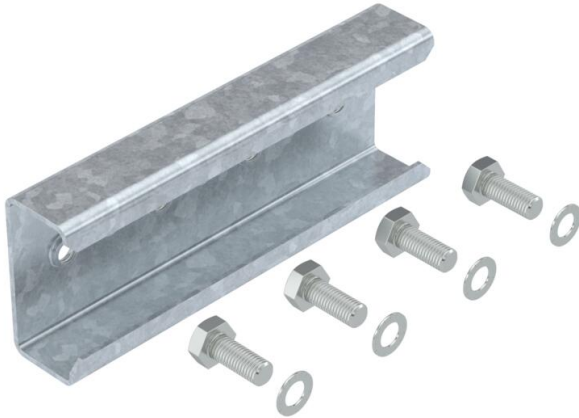
# Technical data sheet

## Straight connector for support profiles, free-standing system

Item number: 5901215



Straight connector to connect support profiles for free-standing photovoltaic systems. Fastening with pre-installed M10 screw, screw-on with Torx 30 wrench.



<b>St</b>	Steel
<b>FT</b>	Hot-dip galvanised

### Master data

Item number	5901215
Type	LV FT
Description 1	Straight connector
Description 2	for truss profile
Manufacturer	OBO
Dimension	35x74,5x200
Colour	zinc
Material	Steel
Surface	Hot-dip galvanised
Surface standard	DIN EN ISO 1461
Smallest sales unit	20
Unit of quantity	Piece
Weight	59 kg
Weight unit	kg/100 pc.
CO Footprint (GWP) Cradle-to-Gate	1,9992 kg COe / 1 Piece

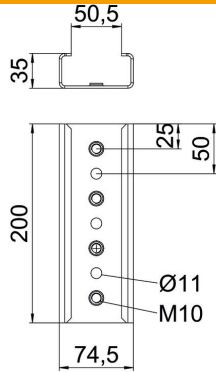
# Technical data sheet

Straight connector for support profiles, free-standing system

Item number: 5901215



## Dimensions



Width	200 mm
Height	74.5 mm

## Technical data

With fastening material	no
Depth	35 mm
Adjustable	no
Photovoltaic connection and fastening element version	Straight connector
With module earthing	no